



FortiGate® 2000E

High Performance Next Generation/
Edge Firewall for the Enterprise



FortiGate 2000E

Every day you're on the lookout for sophisticated attacks designed to penetrate your organization and steal valuable information. At the same time, you need to increase network speeds and capacities to accommodate the proliferation of consumer-grade applications and devices. To adequately defend against threats across such a broad range of applications and devices — without slowing down your network — you need a high performance next generation/edge firewall (NGFW) appliance for deep inspection, visibility and control.

Breakthrough Performance

The FortiGate 2000E high performance next generation/edge firewall delivers best-in-class performance with an exceptional 90 Gbps of firewall and superior next generation threat protection. Custom hardware, including the latest FortiASIC™ NP6 processors, and the consolidated security features of the FortiOS™ 5 network security platform make the difference in enabling protection of your applications and network without affecting availability or performance.

Features & Benefits

- Powered by new content processor (CP9) for enhanced IPS and SSL inspection capabilities
- NSS Labs Recommended NGFW and NGIPS delivers top-rated protection
- Intuitive management interface enables broad and deep visibility and control
- Application control plus identity and device-based policy enforcement provides more granular protection
- Integrated high port density delivers maximum flexibility and scalability

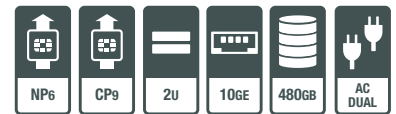
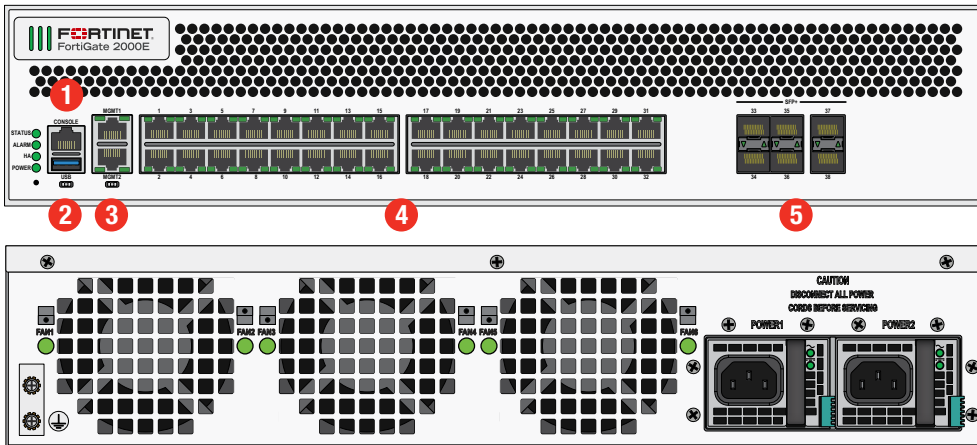
Highlights

Firewall Performance	IPS Performance	Interfaces
90 Gbps	25 Gbps	Multiple 10 GE SFP+ slots and GE RJ45 ports



HARDWARE

FortiGate 2000E



Interfaces

- | | |
|--------------------------------|------------------------|
| 1. Console Port | 4. 32x GE RJ45 Ports |
| 2. USB Port | 5. 6x 10 GE SFP+ Slots |
| 3. 2x GE RJ45 Management Ports | |



Powered by FortiASICs

- Custom FortiASIC™ processors deliver the power you need to detect malicious content at multi-Gigabit speeds
- Other security technologies cannot protect against today's wide range of content and connection-based threats because they rely on general-purpose CPUs, causing a dangerous performance gap
- FortiASIC processors provide the performance needed to block emerging threats, meet rigorous third-party certifications, and ensure that your network security solution does not become a network bottleneck

Network Processor

Fortinet's new, breakthrough FortiASIC NP6 network processor works inline with FortiOS functions delivering:

- Superior firewall performance for IPv4/IPv6, SCTP and multicast traffic with ultra-low latency down to 3 microseconds
- VPN, CAPWAP and IP tunnel acceleration
- Anomaly-based intrusion prevention, checksum offload and packet defragmentation
- Traffic shaping and priority queuing

Content Processor

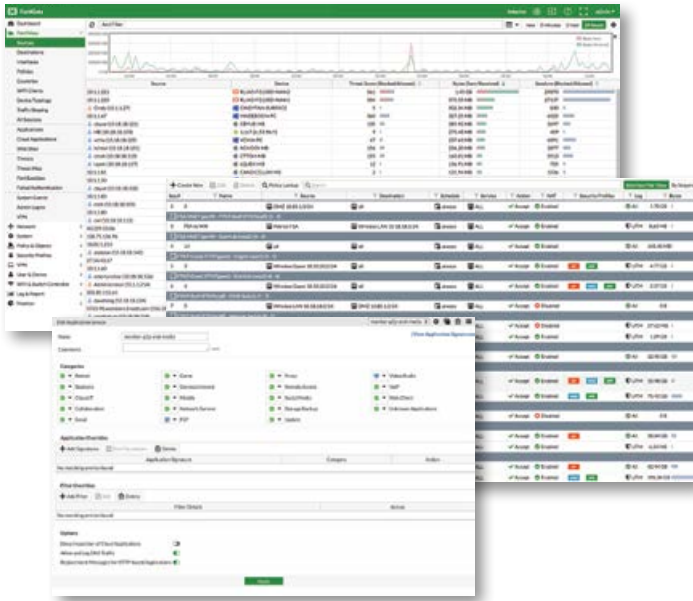
Fortinet's new, breakthrough FortiASIC CP9 content processor works outside of the direct flow of traffic and accelerates the inspection of computationally intensive security features:

- Enhanced IPS performance with unique capability of full signature matching at ASIC
- SSL Inspection capabilities based on the latest industry mandated cipher suites
- Encryption and decryption offloading

10 GE Connectivity

High speed connectivity is essential for network security segmentation at the core of data networks. The FortiGate 2000E provides high 10 GE port densities, simplifying network designs without relying on additional devices to bridge desired connectivity.

SOFTWARE



FortiOS Management UI —
FortiView, Policy Table and Application Control Panel

FortiOS

Control all the security and networking capabilities across the entire FortiGate platform with one intuitive operating system. Reduce operating expenses and save time with a truly consolidated next generation security platform.

- A truly consolidated platform with one OS for all security and networking services for all FortiGate platforms.
- Industry-leading protection: NSS Labs Recommended, VB100, AV Comparatives and ICSCA validated security and performance.
- Control thousands of applications, block the latest exploits, and filter web traffic based on millions of real-time URL ratings.
- Detect, contain and block advanced attacks automatically in minutes with integrated advanced threat protection framework.
- Solve your networking needs with extensive routing, switching, WiFi, LAN and WAN capabilities.
- Activate all the ASIC-booster capabilities you need on the fastest firewall platform available.



For more information, please refer to the FortiOS data sheet available at www.fortinet.com

SERVICES

FortiGuard™ Security Services

FortiGuard Labs offers real-time intelligence on the threat landscape, delivering comprehensive security updates across the full range of Fortinet's solutions. Comprised of security threat researchers, engineers, and forensic specialists, the team collaborates with the world's leading threat monitoring organizations, other network and security vendors, as well as law enforcement agencies:

- **Real-time Updates** — 24x7x365 Global Operations research security intelligence, distributed via Fortinet Distributed Network to all Fortinet platforms.
- **Security Research** — FortiGuard Labs have discovered over 170 unique zero-day vulnerabilities to date, totaling millions of automated signature updates monthly.
- **Validated Security Intelligence** — Based on FortiGuard intelligence, Fortinet's network security platform is tested and validated by the world's leading third-party testing labs and customers globally.



For more information, please refer to <http://forti.net/guard>

FortiCare™ Support Services

Our FortiCare customer support team provides global technical support for all Fortinet products. With support staff in the Americas, Europe, Middle East and Asia, FortiCare offers services to meet the needs of enterprises of all sizes:

- **Enhanced Support** — For customers who need support during local business hours only.
- **Comprehensive Support** — For customers who need around-the-clock mission critical support, including advanced exchange hardware replacement.
- **Premium Services** — For global or regional customers who need an assigned Technical Account Manager, enhanced service level agreements, extended software support, priority escalation, on-site visits and more.
- **Professional Services** — For customers with more complex security implementations that require architecture and design services, implementation and deployment services, operational services and more.



For more information, please refer to <http://forti.net/care>

SPECIFICATIONS

FORTIGATE 2000E	
Hardware Specifications	
Hardware Accelerated 10 GE SFP+ Slots	6
Hardware Accelerated GE RJ45 Ports	32
GE RJ45 Management / HA Ports	2
USB Ports	1
Console Port	1
Onboard Storage	480 GB
Included Transceivers	2x SFP+ (SR 10GE)
System Performance	
IPv4 Firewall Throughput (1518 / 512 / 64 byte, UDP)	90 / 90 / 60 Gbps
IPv6 Firewall Throughput (1518 / 512 / 86 byte, UDP)	90 / 90 / 60 Gbps
Firewall Latency (64 byte, UDP)	2 µs
Firewall Throughput (Packet per Second)	90 Mpps
Concurrent Sessions (TCP)	20 Million
New Sessions/Second (TCP)	500,000
Firewall Policies	100,000
IPsec VPN Throughput (512 byte)	65 Gbps
Gateway-to-Gateway IPsec VPN Tunnels	20,000
Client-to-Gateway IPsec VPN Tunnels	50,000
SSL-VPN Throughput	6 Gbps
Concurrent SSL-VPN Users (Recommended Maximum)	10,000
IPS Throughput (HTTP / Enterprise Mix)	25 / 11.5 Gbps
SSL Inspection Throughput	12.5 Gbps
NGFW Throughput	5 Gbps
CAPWAP Throughput	21 Gbps
Virtual Domains (Default / Maximum)	10 / 500
Maximum Number of FortiAPs (Total / Tunnel)	4,096 / 1,024
Maximum Number of FortiTokens	5,000
Maximum Number of Registered Endpoints	8,000
High Availability Configurations	Active-Active, Active-Passive, Clustering

ORDER INFORMATION

Product	SKU	Description
FortiGate 2000E	FG-2000E	6x 10 GE SFP+ slots, 34x GE RJ45 ports (including 32x ports, 2x management/HA ports), FortiASIC NP6 and CP9 hardware accelerated, 480 GB SSD onboard storage.
Optional Accessories		
10 GE SFP+ transceiver module, short range	FG-TRAN-SFP+SR	10 GE SFP+ transceiver module, long range for all systems with SFP+ and SFP/SFP+ slots.
10 GE SFP+ transceiver module, long range	FG-TRAN-SFP+LR	10 GE SFP+ transceiver module, long range for all systems with SFP+ and SFP/SFP+ slots.
10 GE SFP+ active direct attach cable, 10m / 32.8 ft	SP-CABLE-ADASFP+	10 GE SFP+ active direct attach cable, 10m / 32.8 ft for all systems with SFP+ and SFP/SFP+ slots.
Rack mount sliding rails	SP-FG3040B-RAIL	Rack mount sliding rails for FG-1000C/-DC, FG-1200D, FG-1500D/DC, FG-2000E, FG-2500E, FG-3040B/-DC, FG-3140B/-DC, FG-3240C/-DC, FG-3000D/-DC, FG-3100D/-DC, FG-3200D/-DC, FG-3700D/-DC, FG-3700DX, FG-3810D/-DC, FG-3815D/-DC and FG-3950B/-DC.
AC power supply	SP-FG2000E-PS	AC power supply for FG-2000E and FG-2500E.



GLOBAL HEADQUARTERS
Fortinet Inc.
899 Kifer Road
Sunnyvale, CA 94086
United States
Tel: +1.408.235.7700
www.fortinet.com/sales

EMEA SALES OFFICE
905 rue Albert Einstein
Valbonne 06560
Alpes-Maritimes, France
Tel: +33.4.8987.0500

APAC SALES OFFICE
300 Beach Road 20-01
The Concourse
Singapore 199555
Tel: +65.6395.2788

LATIN AMERICA SALES OFFICE
Sawgrass Lakes Center
13450 W. Sunrise Blvd., Suite 430
Sunrise, FL 33323
United States
Tel: +1.954.368.9990

Copyright © 2016 Fortinet, Inc. All rights reserved. Fortinet®, FortiGate®, FortiCare® and FortiGuard®, and certain other marks are registered trademarks of Fortinet, Inc., and other Fortinet names herein may also be registered and/or common law trademarks of Fortinet. All other product or company names may be trademarks of their respective owners. Performance and other metrics contained herein were attained in internal lab tests under ideal conditions, and actual performance and other results may vary and may be significantly less effective than the metrics stated herein. Network variables, different network environments and other conditions may negatively affect performance results and other metrics stated herein. Nothing herein represents any binding commitment by Fortinet, and Fortinet disclaims all warranties, whether express or implied, except to the extent Fortinet enters a binding written contract, signed by Fortinet's General Counsel, with a purchaser that expressly warrants that the identified product will perform according to certain expressly-identified performance metrics and, in such event, only the specific performance metrics expressly identified in such binding written contract shall be binding on Fortinet and any such commitment shall be limited by the disclaimers in this paragraph and other limitations in the written contract. For absolute clarity, any such warranty will be limited to performance in the same ideal conditions as in Fortinet's internal lab tests, and in no event will Fortinet be responsible for events or issues that are outside of its reasonable control. Notwithstanding anything to the contrary, Fortinet disclaims in full any covenants, representations, and guarantees pursuant hereto, whether express or implied. Fortinet reserves the right to change, modify, transfer, or otherwise revise this publication without notice, and the most current version of the publication shall be applicable.

FORTIGATE 2000E	
Dimensions	
Height x Width x Length (inches)	3.5 x 17.4 x 21.9
Height x Width x Length (mm)	89 x 442 x 555
Weight	37.0 lbs (16.8 kg)
Form Factor	Rack Mount, 2 RU
Power	
AC Power Supply	100–240V AC, 50–60 Hz
Maximum Current	9A
Power Consumption (Average / Maximum)	280 / 430 W
Heat Dissipation	1,467 BTU/h
Redundant Power Supplies	Yes, Hot swappable
Environment	
Operating Temperature	32–104°F (0–40°C)
Storage Temperature	-31–158°F (-35–70°C)
Humidity	20–90% non-condensing
Operating Altitude	Up to 7,400 ft (2,250 m)
Compliance	
	FCC Part 15 Class A, C-Tick, VCCI, CE, UL/cUL, CB
Certifications	
	ICSA Labs: Firewall, IPsec, IPS, Antivirus, SSL-VPN

Note: All performance values are "up to" and vary depending on system configuration. IPsec VPN performance is based on 512 byte UDP packets using AES-256+SHA1. NGFW performance is measured with Flow AV (Quick Mode), IPS and Application Control enabled, based on Enterprise Traffic Mix. SSL Inspection is measured with IPS enabled and HTTP traffic, using TLS v1.2 with AES256-SHA. CAPWAP performance is based on 1444 byte UDP packets. LAG support and redundant interfaces are limited to certain port configurations. Please refer to technical documentation.

For complete, up-to-date and detailed feature set, please refer to the Administration Handbook and FortiOS Datasheet.